

# Shiloh Scrapbook

SHILOH MUSEUM OF OZARK HISTORY NEWSLETTER

Vol. 31, No. 2 September 2012

## Sheep to Shawl Turns 25

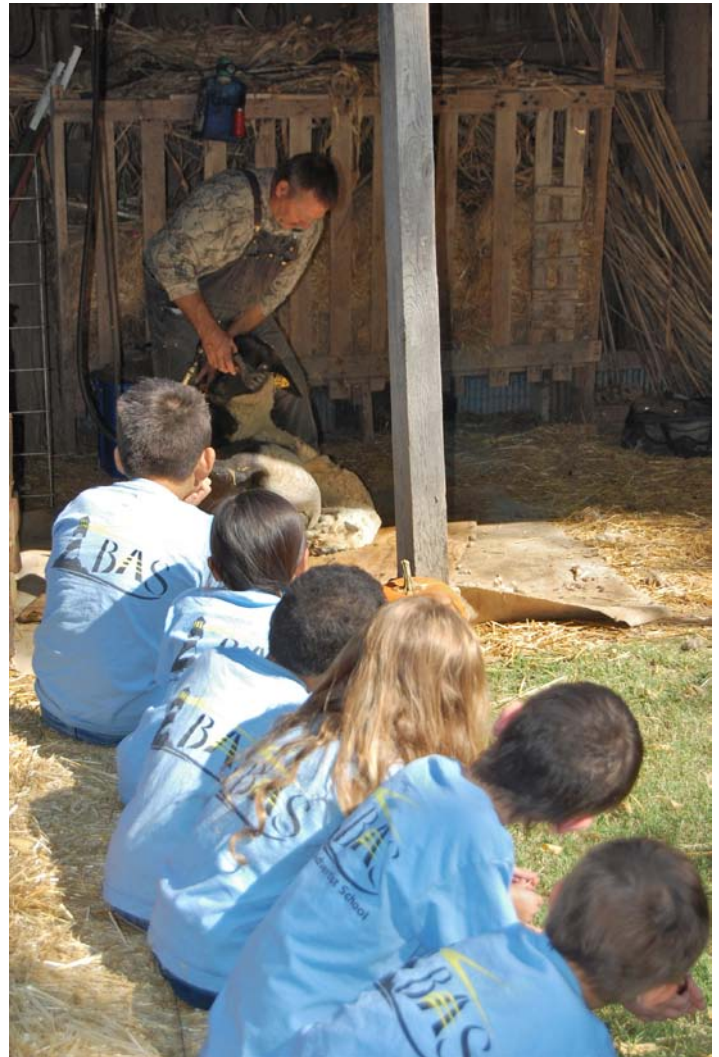
**Carolyn Reno**  
*Collections Manager*

The Shiloh Museum began a very “sheepish” endeavor back in 1987 with a program called “Sheep to Shawl.” Members of the Ozark Mountain Yarn Spinners and the Northwest Arkansas Handweavers Guild came to us with the idea of holding an event showcasing the old-time skills needed to make a shawl, beginning with shearing the sheep, then washing, carding, spinning, and weaving the wool. Over the years, the focus of our Sheep to Shawl program has evolved from an emphasis on the finished shawl to a way to introduce schoolchildren to the traditional methods of cloth production.

For many years, our Sheep to Shawl experience began at a shearing station under a shade tree near the McDonald-Ritter log cabin. When the Cooper Barn was moved to the museum grounds in 1995, it offered a perfect location for the shearing station. The sheep are comfortable inside a stall while awaiting their “haircut,” and schoolchildren sit on hay bales while watching the shearing process.

Stan and Caye Mott of Hogeeye and Ann Smitherman of Winslow brought their Cheviot and Romney sheep to our first Sheep to Shawl. For many years, Clair and Cheryl Driggs of Antioch (Washington County) brought Cheviot lambs to be sheared. Over the course of twenty-five years, many local folks have loaned their sheep for shearing. For the last few years, Danny Belcher, supervisor at the University of Arkansas’s Pauline Whitaker Animal Science Center, has been our sheep provider.

With the exception of a couple of years when he was serving in the military, the shearing has been by Paul Ahrens, one of a handful of professional shearers working in Northwest Arkansas. Ahrens, a graduate of the University of Arkansas, talks school kids through the technology of shearing, demonstrating first with hand shears, then with modern electric shears. After fielding



**Time for a haircut.** Professional shearer Paul Ahrens has the full attention of schoolchildren (not to mention the sheep) attending the museum’s 2011 Sheep to Shawl program.

questions from the kids, Paul gives each child a piece of freshly shorn wool to take home.

From the shearing station, children head down to the log cabin where members of the Wool and Wheel

see SHEEP, page 3

# DIRECTOR'S COLUMN

Allyn Lord



It's that time again— election season—and you're seeking out candidate information on the issues important to you, your family, your business, your future. Have you, as a museum supporter, heard much about museum issues?

Museums play key roles in education, job creation, tourism, economic development, and historic preservation, to name just a few. The museum community has worked together to develop federal policy positions. Here are just three you may want to consider when looking at your national candidates' positions.

**Office of Museum Services.** The Institute of Museum and Library Services is the primary federal agency responsible for helping museums connect people to information and ideas. Its Office of Museum Services (OMS) awards grants to museums to support educating students, preserving collections, coordinating resources, and digitizing collections. In 2010 the five-year authorization for the OMS, unanimously passed by both the House and Senate, totaled \$38.6 million, but the FY12 budget was just \$30.8 million—a 20% shortfall from the authorized funding level.

**Charitable Giving.** Museums depend on charitable gifts for more than one-third of their operating funds

---

## BOARD OF TRUSTEES

Myron Eng, president; Sallyann Brown, vice-president; Dr. Marsha Jones, treasurer; Dolores Stamps, vice-treasurer; Carolyn Bayley, secretary. Eddie Guinn, Dr. Judy Hammond, Dianne Kellogg, Kate Loague, Robert Mello, M. J. Sell, Dr. Bill Smith, Derek Taylor, Jason Trenary, Sally Walker

## EX-OFFICIO BOARD MEMBERS

Allyn Lord, Jim Morriss

## LIFE TRUSTEES

Dr. C. S. Applegate\*, Dr. Dwight Heathman, Martha Lankford, Maudine Sanders\*, Stephen Taylor \*deceased

## STAFF

Allyn Lord, director; Edward Andrus, library assistant; Kathy Plume, secretary/receptionist; Marie Demeroukas, photo archivist/research librarian; Amjad Faur, photographer; Pody Gay, education coordinator; Don House, photographer; Megan Kaplan, education and weekend assistant; Curtis Morris, exhibits manager; Marty Powers, maintenance; Carolyn Reno, assistant director/collections manager; Victoria Thompson, education/collections assistant; Susan Young, outreach coordinator

and, especially in this economy, have seen a decline in charitable gifts. Museums are concerned about any proposed limitations because they would have a chilling effect on the ability of museums to attract donations and therefore serve their communities. Efforts to reduce the value of the tax deduction for charitable contributions hurt charities, including museums.

**Elementary and Secondary Education Act.** Museums are key education providers—educating students, providing professional development to teachers, and helping teach local curriculum. However, the Act's last reauthorization (commonly known as the "No Child Left Behind Act") reduced opportunities for students to participate in museum visits and benefit from the kind of comprehensive learning environment museums provide. .

What else should you know? In addition to preserving and protecting more than one billion objects nationwide, museum collections are critical to telling our national story. Historic sites and programs not only protect our heritage, but are economic engines and job creators in their communities. Each year museums contribute more than \$20 billion to the economy, employ over 400,000 Americans, and bolster community tourism industries. Museums attract more than 165 million visitors annually.

See [www.speakupformuseums.org/issues\\_at\\_a\\_glance.htm](http://www.speakupformuseums.org/issues_at_a_glance.htm) for more information on the American Alliance of Museum's positions on key issues.

---

## VOLUNTEERS (JUNE-JULY 2012)

Ethna Billings, Reuben Blood, Karen Cordell, Tom Duggan, Steve Erwin, Martha Estes, Regina Gabel, Christina George, Margaret Johnson, Bill Jones, Mary John Jones, Ann Kabanuck, Mitsy Kellam, Darlette Kendrick, Tommy Kendrick, Jim Langford, Mira Leister, Adam Pang, Sharon Perry, Barbara Pulos, Russell Self, Kendra Smith, Carly Squyres, Truman Stamps, Ray Toler, Virginia Venable

---

## MISSION STATEMENT

*The Shiloh Museum of Ozark History serves the public by providing resources for finding meaning, enjoyment, and inspiration in the exploration of the Arkansas Ozarks.*

Adopted by the Shiloh Museum Board of Trustees on July 13, 2006

---

## SHILOH MUSEUM OF OZARK HISTORY

118 W. Johnson Avenue • Springdale, AR 72764 • 479-750-8165  
[www.shilohmuseum.org](http://www.shilohmuseum.org) • [shiloh@springdalear.gov](mailto:shiloh@springdalear.gov)

Open Monday-Saturday, 10 a.m. -5 p.m. • Free Admission

## Sheep

From page 1



**Left:** Carol Alford with the Wool and Wheel Handspinners Guild shows how a spinning wheel is used to transform fiber into thread. **Right:** Gearolyn Thompson with the Northwest Arkansas Handweavers Guild helps schoolchildren try their hand at weaving.

Handspinners Guild demonstrate the crafts of carding and spinning. The Guild dates back to the 1970s when several women founded the Ozark Mountain Yarn Spinners.

As children enter the cabin, they are greeted with the sights, sounds, and smells of a pioneer home: women dressed in 1860s garb, the whirring of a spinning wheel, and the delicious aroma of stew cooking in the fireplace. The spinners show and tell how wool and cotton are cleaned and made ready for spinning, what native plant materials can be used to dye the yarn a variety of colors, and how the spinning wheel transforms loose fibers into yarn.

The final stage of Sheep to Shawl involves a visit to the museum's Steele General Store, where members of the Northwest Arkansas Handweavers Guild have their looms set up to demonstrate

the way yarn or thread is woven into cloth. The Handweavers Guild was originally organized as the Benton County Rug Weavers Association in the 1920s. They became the Northwest Arkansas Handweavers Guild in the late 1940s and their workshops held at the War Eagle Mill evolved into the War Eagle Arts and Crafts Fair in 1954.

Once everyone is gathered around the looms, the weavers teach the children some words like warp (the threads that run front to back on a loom) and weft (the thread that is woven back and forth through the warp). Everyone gets to try their hand at weaving on a variety of looms, from floor and table looms to hand-held finger looms.

Sheep to Shawl is held during two days in early October. Realizing we can only accommodate so many school classes in that time, the Wool and Wheel Handspinners Guild created a Sheep to Shawl Discovery

Box for the museum that's full of hands-on educational items for teachers to check out and take back to the classroom. That way, even if a class can't come to Sheep to Shawl, the students can still learn about the history and craft of spinning and weaving.

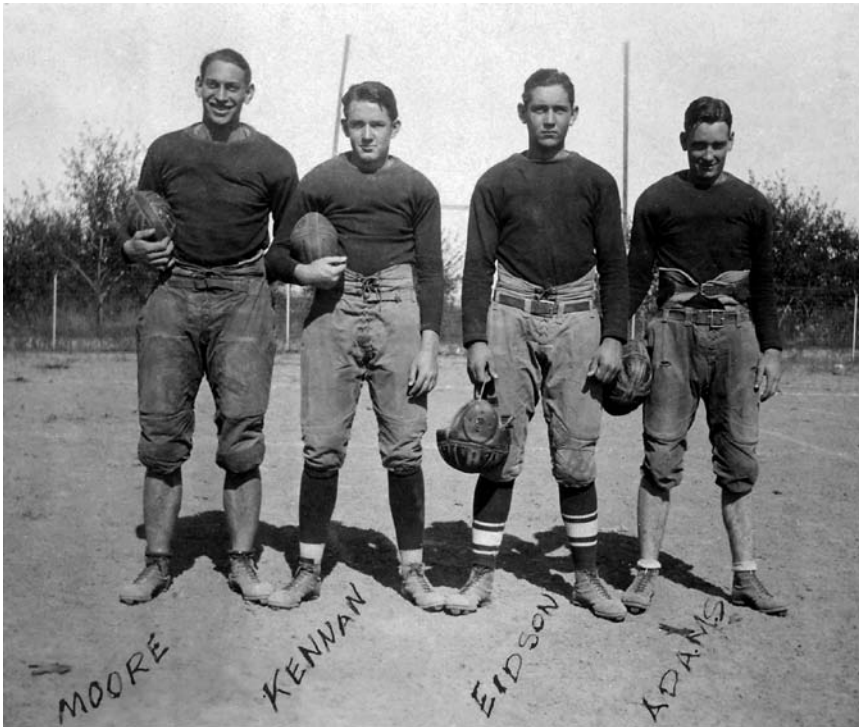
Over the course of two days the sheep shearer, spinners, and weavers will speak to some 800 children. Their commitment to educating our youth is why the Shiloh Museum has been able to offer the Sheep to Shawl program over twenty-five years. The event garnered statewide recognition when the Arkansas Museums Association named Sheep to Shawl as the "best educational program" in 2006.

Enthusiastically received by both teachers and students, Sheep to Shawl provides a unique opportunity for young people to learn about traditional Ozark life. 🐏

## Beans, Cornbread, and Football: Three Great Local Traditions

Join us for a beans and cornbread supper, **Friday, October 26, from 4:30-6:45 p.m.** in the Springdale High School rotunda. While you're there, enjoy a photo exhibit on Springdale's school athletic history. If that's not enough sports for you, walk over to nearby Bulldog Stadium, where the Springdale Bulldogs will be taking on the Bentonville Tigers at 7:30 p.m.

Supper tickets are \$6 in advance, \$8 at the door, and \$24 for a family ticket, with proceeds going to support the Shiloh Museum and the Springdale Athletic Foundation. You can purchase your tickets at the museum or from a museum board member.



**Left:** Members of the 1929 SHS football team.  
*James Evans Jr. Collection*

**Above:** Members of the 1909 SHS girls basketball team, along with Prof. William James Peterson, who coached the team along with his teaching duties.  
*D. D. Deaver Collection*



## Thanks, Master Gardeners!

We're delighted to announce that the Washington County Master Gardeners have added the Shiloh Museum as one of their sanctioned volunteer projects. They recently tackled the bed between the Searcy House and the McDonald-Ritter log cabin, replacing a gnarly mess of invasive trees and vines with daylilies and native trees such as sassafras and possumhaw.

From left to right: Master Gardeners Vande Southerland and Reuben Blood get some help from museum staff members Marty Powers and Pody Gay.

## DONATIONS TO THE COLLECTIONS

May-July 2012

*Carroll County Historical Society:* Oral history interviews with McKinley Weems and Timothy Garrison, 2012

*Reeva Clark:* First State Bank ashtray, mid-1900s; World War II Red Cross, Emma Avenue, and Veterans Hospital postcards; Monte Ne pamphlet; Assignment card for free text books, 1951; Springdale High School textbooks, 1955-1959

*Grover Cordell:* Framed memorial photographs of Stony Point School World War II soldiers, 1950; Ozark White Lime Company timebook, 1931-32; Ozark White Lime bagging room photograph, ca. 1930

*Norma Crass:* O.L. Harris' postmaster certificate, Vale (Washington County), 1938; Norman Harris' Arkansas State Fire College certificate, 1954; Springdale volunteer fire department photo, 1954

*Dr. Johnny Dorman:* Blueprints for Springdale Memorial Hospital addition, 1973

*Nancy Dugwyler:* Apron and photographs of KBRS Radio and Springdale News Chili Cook-Off, Springdale, 1985; Kiwanis-Jaycees Minstrels program, script, and photograph, Springdale, 1956

*Thelma Ellis:* *The Blue and The Gray* movie premiere t-shirt, Springdale, 1982

*Nena Hendricks:* Handmade baby clothes of Nena Brogdon, Springdale, ca. 1935

*Marilyn Hicks:* Tintypes of Luella and Peter Stringfield, War Eagle (Benton County), late 1870s

*Judy K. Horne:* 20th Century Typewriting textbook, University of Arkansas, 1938

*Madison County Historical Society:* Negatives of schools in Elkins, Huntsville, & Kingston taken by Albert King, 1920s-30s; negatives from the Bill Basham estate sale, early 1900s

*Sharon McGuire:* Paper fan from 1920 Lincoln Apple Festival; Roadrunner drink cup, Springdale, late 1900s; Kawneer Grand Opening ruler, Springdale, late 1900s; First State Bank yardstick, Springdale, 1961

*Melissa Merrifield:* Photographs of local sites by Harold Page, Springdale, 1980s

*Melinda Nickle:* Springdale High School "School-Within-a-School" program papers, 1986-1994

*Carolyn Page:* Coger Drugstore calendar, Springdale, 1978; Washington County Centennial Fair program, 1956; Welch Grape Juice Company letters, 1950s; *Springdale News* First State Bank edition, 1961; *Madison County Record*, 1994; photo of A.B. and Ethel Coger

*Joanne Paisley:* Photograph album/scrapbook of Abigail White, Springdale, late 1920s

*Barbara Pulos:* Photographs of Springdale school classes and people, 1940s-2000s

*Debbie and Walter Reed:* Baby quilt; pipe and lighter; class ring; school annual; crochet hook; miscellaneous papers of the Reed and Mitchell families, Garfield, 1930s-late 1900s

*Charlie Rush and Pat Perona:* Smock apron for Springdale Fire Department Bucket Brigade Auxiliary made by Mildred Fredrick, mid-late 1900s

*Ethel Simpson:* Baby clothes of Mike Simpson, Fayetteville, 1960

*Wanda Stephens:* *Up & Coming* and *Ozark Feminist Review* newsletters, 1980s-1990s

*James Tisdale:* Photographs from the Tisdale/Byrd/Williams families, Goshen, ca. 1900s

*William Walker:* Photograph of Michael Zotti's chemistry class, Springdale High School, 1961-62

*Kathleen Wallace:* Photographs from the Davis and Webb families and *Northwest Arkansas Times*, Fayetteville and Washington County, 1900s

Photographs loaned for copying: *Onial Cook, Joanne Paisley, Dianna Payne, Debbie and Walter Reed, Kathleen Webb*

*Want to learn more about artifacts and photos in our collection?*

Check out the "Artifact of the Month" and "Photo of the Month" pages on our website.

### Timely topics

Just in time for our 35th Ozark Quilt Fair on September 8, and our "Other Voices: Civil War in the Ozarks" symposium on November 10, we have some **new books and gift items in our store** sure to be of interest to quilt lovers and Civil War buffs. Museum members receive a 10% discount, and proceeds help support the museum.

# My Summer at Shiloh

Carly Squyres

Intern



**Making leather britches.** Museum intern Carly Squyres (left) shows a young visitor and her mother how Ozark pioneers made “leather britches” beans: fresh green beans were strung together and hung up to dry for use at a later time.

When I started my internship at the Shiloh Museum, I assumed that I would learn a lot and gain some experience in the field. Nearly four months, one pioneer dress, five days of History Camp, and an immeasurable amount of weaving later, I’ve had an amazing experience I never anticipated.

While other friends have referred to their respective internships as a necessary evil, I woke up excited every day that I knew I would be at the Shiloh Museum (yes, even the days I had to wear a pioneer dress!). In May, my days at Shiloh meant participating in school programs and teaching local

students what life was like for the pioneers. By June, school was out and it was time for History Camp, which meant five days of learning, crafts, and, most importantly, historically themed snacks. Seeing six- to nine-year-olds get excited about their history and anxious to learn more was incredibly rewarding and made all the preparations worth it. July and August meant summer events, tours, and continuing work on a new Discovery Box for local teachers to use.

Through the new Discovery Box, in particular, I’ve been able to expand my own knowledge of history. As a Texas native with a degree in history,

I knew some Arkansas history, but very little specific to Northwest Arkansas. This made my work on a lesson plan that teaches about the desegregation of Fayetteville High School through newspapers from that time especially exciting. I’ve not only been able to research this time in history, but also take myself back in time through the papers Ozarkers were reading for their news.

Not only has my time at the museum been educational, it’s also been a lot of fun and I’ve gotten to know the fantastic people at Shiloh. From playing the game of Graces (which involves sending wooden hoops sailing through the air) to lunchtime conversations on dialect (museum staff members hail from the Ozarks, Chicago, Boston, Michigan, and England), there’s never a dull moment. Additionally, not only has the staff guided me through projects for the Shiloh Museum, they’ve also been incredibly helpful as I’ve pursued full-time positions elsewhere.

My time at the Shiloh Museum has strengthened my conviction that this is the right career path for me, and thanks to this invaluable experience I was offered a full-time position at a museum in Oregon. While I’m sad to be leaving the Ozarks, I’m grateful for everything I’ve learned and excited to apply this knowledge to new places.

## Keep up with us!

Subscribe to our free monthly eNews. Send an email to [shiloh@springdalear.gov](mailto:shiloh@springdalear.gov) with “Subscribe” in the subject line.

Our podcast series is available on our website or at iTunes U.



twitter

## WISH LIST

### For oral history interviews

- Marantz PMD661 digital audio recorder \$600
- Marantz PMD661 carry case, \$60
- 2–Sony Electret ECM-88B condenser microphone units, with power supply, \$500 each = \$1000
- Portabrace PC333 audio recorder case, \$300
- Sony dynamic stereo headphones MDR-7506 with 1/8-1/4 adapter, \$100
- 2–32 GB digital SD flash cards (Class 6, 32-bit), \$40 each = \$80
- 2–10' Pearstone XLR cables, \$20 each = \$40

### Reproduction items for Civil War era living history programs

- canvas water bucket, \$20
- shaving set, \$55
- folding knife, fork, spoon, \$25
- pocket watch, \$15
- leather haversack, \$95
- canvas haverack, \$16
- steel canteen, \$15
- wooden candle lantern, \$15
- 1860 pistol, \$125
- brogans, \$110
- leather wallet, \$35

### For research library

- *Old Brands and Lost Trails: Arkansas and the Great Cattle Drives* by Ivan Denton
- Back issues of the *Boone County Historian*:
  - Vol. 6, No. 4 (1983)
  - Vol. 7, No. 4 (1984)
  - Vol. 8, No. 1-3 (1985)
  - Vol. 9, No. 1-4 (1986)
  - Vol. 10, No. 1, 3, 4 (1987)
  - Vol. 11, No. 1-4 (1988)
  - Vol. 12, No. 1-4 (1989)
  - Vol. 15, No. 4 (1992)
  - Vol. 17, No. 2 (1994)
  - Vol. 18, No. 2-4 (1995)
  - Vol. 19, No. 1-4 (1996)
  - Vol. 20, No. 1-4 (1997)
  - Vol. 21, No. 1-4 (1998)
  - Vol. 22, No. 1-4 (1999)
  - Vol. 23, No. 1-4 (2000)
  - Vol. 24, No. 1-4 (2001)
  - Vol. 25, No. 1-4 (2002)
- Back issues of *Boone County Historian/Oak Leaves*
  - Vol. 1, No. 1-4 (2003)
  - Vol. 2, No. 1-4 (2004)
  - Vol. 3, No. 1-4 (2005)
  - Vol. 4, No. 1-4 (2006)
  - Vol. 5, No. 1-3 (2007)

### For collections

- 2–20" Edsal commercial steel service cart (\$140 each)
- Haxton Woolen Mill blanket

### For exhibits workshop

- Dust collection system, \$600
- 220 volt air compressor, \$700
- Woodworking clamps, long ones are especially helpful

### Thank you for these “for-use” items. (May-July 2012)

*Neva Boatright*: Springdale centennial booklet

*Houstine Cooper*: *Lifespan of a Leaf*

*Norma Hoag*: *Postal History of Washington County, Arkansas*

*Shirley Heard Mathey*: *The 4-H House: History/Students*

*M.J. Sell*: Manuscript of early Eureka Springs businesses, facts, etc., compiled by Charles V. Kappen; *A Book of Truth: The Book of His Life [J.A. Wyrick] for 71 Years in the Ozarks*

*Dolores Stamps*: lunch for photo identification volunteers

## *Back When I Was Your Age . . .*

*A storytelling workshop for grandparents and others who want to share stories with children*

**Saturday, November 3, 2012**

**10 a.m.–3 p.m.**

- Be exposed to the best in children’s literature
- Learn what makes a good story
- Get guidance in creating and sharing stories from your own past and family history
- Find story-filled memories using museum artifacts

Workshop facilitator Jan VanSchuyver’s has been a puppeteer and storyteller and a children’s librarian. Most recently she retired from being a school librarian to devote time to writing, teaching, and being a full-time grandma and auntie.

Cost: \$12 for museum members, \$15 for non-members. Bring your lunch; coffee and tea will be provided. Pre-registration encouraged; call the museum at 750-8165.

## Recent Additions to Our Photo Collection



**Boys will be boys.** This image of what appears to be a school picnic is from a collection of photo negatives donated by the Madison County Genealogical and Historical Society. The photographer was Albert King, a schoolteacher in Huntsville, Kingston, and Elkins during the 1920s and 1930s.



**Home sweet home.** Tim Garrison of Eureka Springs shared many family photos with us, including this circa 1908 image showing the fine homeplace of his great-grandparents, Dr. James H. and Bessie Webb, who lived in the Mundell community (Carroll County). From left to right are Etha, Bessie, Rose, and James H.

The Webbs later moved to Eureka Springs and the house was torn down when Beaver Lake was built in the early 1960s. Today, the Webb homesite and the community of Mundell lie deep beneath the waters of the lake.



# THE SHILOH MUSEUM ASSOCIATION

August 2011–July 2012

*We are proud to recognize these members for their generous annual contributions.*

## **Life**

Leon Allen  
Roberta Platt  
Tyson Foods, Inc.  
Bruce & Mary Vaughan

## **Founding**

Gerald & Vicki Harp  
Steve & Cheryl Miller

## **Benefactor**

Linda Moore Brown  
Martha Lankford  
Multi-Craft Contractors  
Geoffrey Oelsner  
Mr. & Mrs. Gene Thompson  
Ray Toler  
Mrs. Willard Walker

## **Sustaining**

Ken & Cheryl Cardin  
David & Vonita Carpenter  
Nancy Hamilton  
Harps Food Stores  
Pat & Earlene Henry  
Isaac & Doris Hughey  
Allyn Lord  
Cleo Matter  
Lois McJunkin  
Springdale Kiwanis Club  
Truman & Dolores Stamps

## **Sponsor**

Jessie Billings & Myron Eng  
Mr. & Mrs. Joe S. Boone  
Virginia Burdick  
Dr. James Chase  
Crystal Bridges Museum of  
American Art  
Mark & Susan Curtis  
Nancy Dodson  
Lamar & Joy Drummonds  
First Security Bank  
Helene Furst  
Cleon & Fleeta Gentry  
James & Sandye Graham  
Orville Hall Jr.  
John & Judy Hammond  
Jeanne Harp  
Dwight & Helen Heathman  
Betty Hinshaw  
Henrietta Holcomb  
Dorothy McGrew Hood  
Joseph Joiner  
Hartzell & Marsha Jones  
Mary John Jones

Al Kaepfel  
Doug & Tess Kidd  
Becca Kohl & Kirby Lambert  
Jay & Polly Lancaster  
Frank & Evelyn Maestri  
Robert & Louise Maringer  
Bob & Mary McGimsey  
Cecilia Hufstедler Morgan  
Mary Bess Mulhollan  
Al Newton  
NWA Medical Center  
Auxiliary  
Ozark Film & Video  
Lois Pantzer  
Laura Redford  
Adella Roberts  
Dorothy Sample  
Jennifer & Glenn Schnetzinger  
Bobby & Diane Shaw  
Kim Simco  
Alice Ann Simkins  
John & Vande Southerland  
Wanda Brewer Stephens  
W. H. Taylor  
Jerre & Judy Van Hoose  
Walker Bros. Insurance, Inc.  
William Walker  
Tom & Vivian Worthy  
Buddy & Linda Wray

## **Patron**

Martha Agee  
Eugene & Susan Anderson  
John Michael Andrews  
Patricia Armstrong  
Mr. & Mrs. Bill Bailey  
Dr. Murl & Concetta Baker  
Bedford Camera & Video  
Lou & Trisha Beland  
Bob & Patty Besom  
Kathryn Birkhead  
Robert Bonham  
Gene & Ann Bordelon  
Betty Bowling  
Jerry & Kay Brewer  
Brad Bruns  
Abby Burnett  
Buddy & Susan Chadick  
A. B. Chenault  
Holly Childs  
Walburn Clayton  
Clements & Associates  
Elaine Cobb  
Dr. Don & Wylene Cohagen  
Jo Condra

Charles & Beverly Cosby  
Dr. & Mrs. Charles Cotton  
Gary Culp  
Natalie Davis  
Bob & Sandy Downum  
Thomas & Marion Duggan  
Dr. Alfred Einert  
Pete & Shirley Esch  
David & Cathy Evans  
Mary Farley  
Lynn Fitzpatrick  
Eileen Fredericks  
Linda & Arnie Fulton  
Sam Goade  
Jay & Joyce Hale  
Al & Dorothy Hanby  
Mary Gilbreath Harris  
Dr. & Mrs. Morriss Henry  
Dr. Sunny Hinshaw  
Glenda House  
Janet Huntsman  
Harriet & Jerome Jansma  
Bill & Kathy Jaycox  
Gary & Vicki Jech  
Dr. Travis Jenkins  
Mr. & Mrs. Robert Johnson  
Glenn Jones  
Just-Us Printers, Inc.  
Robert & Ann Kabanuck  
Hannah Karnbach  
Tom & Mary Lynn Kennedy  
Richard & Phyllis Kuehl  
James & Marie Langford  
Margaret Latture  
Mira Leister  
June Martin  
Jim Morriss  
Wendel & Sarah Nothdurft  
NWA Civil War Roundtable  
Woody Ogden  
Bonniebell O'Neal  
Tom Oppenheim &  
Marie Demeroukas  
Carolyn Page  
Ival Parker  
Dr. Jackie Paxton  
Ralph Pendergraft  
David & Geneva Powers  
Anne Prichard  
James & Donna Ramey  
Pam Redfern  
Thomas & Peg Rogerson  
Theresa Rolow  
Schmieding Foundation  
Bill & Sherry Setser

Dr. & Mrs. Mitch Singleton  
Harvey Smith  
Margarita Solorzano  
Greg Spencer  
Jean Strong  
The Stylist (Bob Cherry)  
Martha Sutherland  
Wilma & Carol Sutton  
Lawrence Swaim  
Suzanne Ternan  
Scott & Connie Test  
Kenneth Trapp  
Clara & Walter Turnbow  
Jan Walker  
Gay Wheat  
Libby Wheeler  
Mike & Marjorie Whitmore  
James & Mary Jo Wickliff  
Jessica Williams  
Jacqueline Zahariades

## **Senior Couple**

Ron & Lois Allen  
Dr. & Mrs. David Andrews  
John & Carmen Archer  
John & Jeannette Atkins  
Howard & Naomi Baird  
Jean Bollinger  
Steve & Wanda Bone  
Eddie and Betty Bradford  
Mr. & Mrs. M. E. Brown  
Robert & Carolyn Brown  
Dr. & Mrs. Walter Brown  
Robert & Karen Chambers  
Paul & Jo Bee Chapman  
Larry & Beverly Clinkscales  
Mr. & Mrs. Bob Collins  
Charles & Pearl Couch  
Mr. & Mrs. Norman Crowder  
Neil & Donna Danner  
George & Rosa Lea Davis  
Don & Judith Day  
Dr. & Mrs. E. P. Deines  
Forrest & Jean Dipboye  
Wesley & Irma Eckles  
Larry & Anita Eden  
Burr & Ada Fancher  
Miller & Peggy Ford  
Bill & Catherine Foster  
Mr. & Mrs. Clyde Graham  
Ken & Lynn Griffin  
Alex & Carol Hamilton  
Ed & Jo Ann Hansen  
Ron & Jane Harrison  
Ralph & Wilma Hawkins

Jim & Judy Hefner  
Robert & Rose Ann Hofer  
John & Rose Marie Hogle  
Billy & Verna Hutchens  
Don & Zelpha Johnson  
Gary & Barbara Johnson  
John & Sally Ann Johnson  
Bill & Alice Jones  
Tommy Jones  
Tommy & Darlette Kendrick  
LeRoy & Sue Kerst  
Jack & Sylvia King  
Gene & Anna Mary Layman  
Ethan & Jo Lightfoot  
James & Marie Lookingbill  
Jack & Malinda Lynch  
Jerry & Betty Martin  
Harold & Sharon McGuire  
Chrystene & Sonny McKenzie  
Larry & Barbara Owens  
Lee & Beverly Parker  
Weldon & Edwina Peters  
Joseph & Marlene Piazza  
A.D. & Janet Poole  
Mr. & Mrs. Deryl Powers  
Mr. & Mrs. Wilbur Rankin  
Fred & Ruth Ann Ritchie  
Laurence & Margaret Roberts  
Fred & Jeri Robinson  
Mr. & Mrs. John Robinson  
Mr. & Mrs. William Roblee  
Bob & Cathy Ross  
Len & Lois Rott  
Bruce & Junellia Russell  
Richard Scates  
Don & Shirley Schaefer  
Russell Self & Mary Umbaugh  
Charles & Ann Shumate  
Mr. & Mrs. H. H. Simmons  
Harold Sims  
Larone & Pat Smith  
Bill & Clara Staggs  
Ollen & Mildred Stepp  
Jerry & Wilma Stockton  
Gerald & Jeanne Tackett  
E. E. & Lee Thompson  
Lyell & Marcella Thompson  
Kurt & Gene Tweraser  
Mr. & Mrs. Guy Wann  
Dr. & Mrs. Lloyd Warren  
Mr. & Mrs. Arlis Watkins  
Sam & Elizabeth Weathers  
Dr. & Mrs. Tom Whiting  
Roger & Kathryn Widder  
Mr. & Mrs. Thomas Wobbe  
Billy & Jo Ann Woodward  
Seth Young

**Senior Individual**

Dorothy Allen  
Barbara Anderson

W. T. & Francis Atkins  
Jeanie Baltz  
Ruth Beard  
Joan Bender  
Carol Brodnax  
Jack Browne  
Janice Bunch  
Mildred Carnahan  
Linda Chancellor  
Donna Charlesworth  
Chris Christoffel  
Reeva Clark  
Houstine Cooper  
Patricia Cornish  
Jean Crone  
Madelyn Curry  
Elnora DeFrene  
Mrs. Eugene Eddy  
Nancy Elkins  
Thelma Ellis  
Lewis Epley Jr.  
Nettie Everett  
Elaine Farish  
Helen Fisher  
Elizabeth Floyd  
Mr. & Mrs. Kenneth Galloway  
Bob Goodwin  
Joe Carnes Guinn  
Nadine Hamilton  
Sondra Heying  
Jerry Hogan  
Richard Holland  
Juanita Kaiser  
Phyllis Kettleman  
Beth Kimbrough  
Wanda King  
Carl Koffler  
Barbara Kossieck  
Robert Lane Jr.  
June Loyd  
Charles Lumbrezer  
Larue Mabry  
Annabel McCollough  
Chris McCollum  
Marilyn Meek  
Robert Mello  
Beverly Melton  
Patricia Morgan  
Willie Nemec  
Rose O'Connor  
Joan Pharr  
Pat Pond  
Barbara Pulos  
Jane Purtle  
Joyce Richards  
Pam Ridley  
JoAnne Rife  
Ray Ritter  
Fern Robbins  
Ann Roberts  
Helen Rollans

Veda Russi  
Madge Roberts Scharber  
Marjorie Shafer  
Bill Shook  
Lois Slusarek  
Amelia Smith  
Caroline Smith  
Jo Ann Smith  
David Stiegler  
Ron & Karlene Susnik  
Ruby Shaw Terry  
Darlene Test  
Robert Toney  
Sally Walker  
Kathy White  
Dorothy Wilson  
Dale Zumbro

**Family**

Elizabeth Adam &  
Doug James  
Gilbert & Geraldine Alvis  
Mark Arnold & Gail Halleck  
Carroll & Judy Arthurs  
Donna Bailey  
Daymara Baker  
Gary & Donna Barnes  
Jerry & Dona Barnett  
Lonnie & Jane Barron  
Michael & Mary Bauer  
Charles & Sherrie Bayles  
Curt & Carolyn Bayley  
Cynlee & Tim Billings  
B. R. & Katy Black  
Richard & Gaye Bland  
Wes Block  
Jim & Lisa Blount  
Harry & Kathi Blundell  
Dr. & Mrs. John Boyce  
Danny Brackett  
Randy & Linda Bradley  
Stephen Brannan  
Charles & Jana Britton  
Linda Brown  
Sallyann Brown  
Randy Bunner  
George Burch  
Steve Burch  
Jacqueline Burnett  
Ivian Butler  
Robert & Bernie Callier  
Dr. & Mrs. James Cherry  
Donald Choffel  
Blake Clark & Jan Brown  
Roger & Sherma Clark  
Cliff & Ava Clemmons  
Janet Clower  
Al & Carolyn Coakley  
David & Cheri Coley  
Beverly Cortiana-McEuen  
Leslie Coston

Jim & Cathy Crouch  
Mark Czmyrid & Paula Boles  
Jerry & Joey Danenhauer  
Shirley Danks  
Galen & Laura Denham  
Susan Dewey  
Tom & Mary Dillard  
Allen & Carolyn Donaghey  
Lela Donat  
Sharon Donnelly &  
James Duncan  
Donna Dover & Ann Teague  
Carolyn Dowling  
Michael & Amy Driver  
Kathe Dyer  
Mary Jane, Ovi ,&  
Mary Beth Dyson  
Steve & Linda Erwin  
Fayetteville B & PW  
William Flanagan &  
Barbara Jaquish  
Alan & Patricia Fortenberry  
Tom & Darlene Fraizer  
Jeff & Kay Franco  
David Franks &  
Katie Murdock  
Lani Froelich  
Tim & Beverly Graham  
Jim & Anne Greene  
Lowell & Kathy Grisham  
Eddie & Nancy Guinn  
Louise Hancox  
Sheron Harp  
Jason Hatfield  
Jacob & Michelle Hayward  
Jason & Angela Hayward  
Dinesh & Stephanie Hegde  
Lisa Childs & Donald Hendrix  
Tommy & Tommie Hensen  
Harold High  
Derl & Marilyn Horn  
LeeRoy & Mary Horn  
Curtis Hornor  
Don House  
Mary House & Family  
Tom & Sylvia Howard  
James & Dodie Hunter  
Jimmy & Vera Hylton  
Charles Kappen  
Mitsy Barnes Kellam  
David & Dianne Kellogg  
Gary & Mary King  
Hiron & Mada Knight  
Don & Louise Lareau  
Marian Carter Ledgerwood  
Robert & Sarah Leflar  
Liz Lester  
LuAnn Little  
Katherine Loague  
Mr. & Mrs. Don Love  
Don Lowe

*continued*

Jim & Sue Lynch  
Bob Mainfort & Mary Kwas  
Ray & Loretta Mansell  
Dwain & Rita Manske  
Gregory & Victoria Marshall  
Jo Ella Martini & Family  
Sam & Melinda Mason  
Donald & Mollie Mayes  
Jim & Kathy Miller  
Gordon & Izola Morgan  
Donna Morris  
David & Diana Morse  
Mike & Karen Morton  
Shannon & Craig Mueller  
LaDeana Mullinix  
Vaughn & Carolyn Neil  
David & Carolyn Newbern  
Tom & Carmen Newberry  
Paul & Eunice Noland  
NWA Christian Home  
Educators Association  
NWA Sacred Harp Singers  
Charles Oliver  
Ozark Prosthodontics  
Janine Parry &  
Bill Schreckhise  
Mike & Denise Pearce  
Frances Pelton  
Jay & Betsy Penix  
Rebecca Peterson  
Thomas Pittman  
Curtis & Beth Presley  
William Pulliam  
Bob Razer  
David & Kathy Reece  
Deborah Reed  
Tom & Lynn Reed  
Robin Riedle  
Jim & Susan Rieff  
Barbara Roberts  
Bill & Emily Robertson  
Mr. & Mrs. Bill Rollins  
Dr. Roy Rom  
Bob & Cathy Ross  
Justin & Bianca Rucker  
Jim Rutledge  
Clint Schneklath  
Elizabeth Scott  
Jim & Jane Scroggs  
Mark & Clara Self  
Marcella Sharum &  
Drucilla Morris  
Larry & Rhea Shivel  
David & Jackie Sizemore  
Lee & Shirley Sletten  
Mike & Brenda Smart  
Bill & Libby Smith  
Christy & Steve Smith  
Kim & Nancy Smith  
Brian Spielman  
Richard Stamps

Charlotte Steele  
Stites Family  
Keith & Mary Sutton  
George Tait  
Joseph Taylor  
Tenney Family  
Dana Thompson  
Jean Toenges  
Ray & Vera Tripp  
Sallye Turley  
Nola Van Scyoc  
Jan VanSchuyver &  
Cindy Parry  
Charles & Virginia Venable  
Don & Shannon Walker  
Mike & Christy Walker  
Catherine Wallack  
Mark & Martha Wann  
Ann Webb  
Mary Ann Westphal  
David Whitmore  
Dr. & Mrs. Ted Wiggins  
Don & Joanna Williams  
John & Connie Williams Jr.  
Duane & Judith Woltjen  
Mr. & Mrs. John Worster  
Ora Vay Worthy  
Curtis & Ann Yates  
Mr. & Mrs. Gayland Zeiset

### *Individual*

Tracy Abshier  
Pam Adamson  
Allen County, Indiana,  
Public Library  
Rachel An  
Melissa Armendariz  
Erwin Baird  
Cassandra Barnett  
Angie Bassett  
Diane Block  
Agnes Bowman  
Shannon Bowman  
Laurel Boyd  
Julie Brown  
Lulu Bruns  
Ronda Bryant  
Travis Burnett  
Carlton Cagle  
Beth Carter  
JoLynda Casey  
Zoe Caywood  
Sally Chindamany  
Jack Clark  
Heidi Cohen  
Karen Cordell  
Georgia Davis  
Louise Davis  
Kent Detmer  
Betty Dodson  
Linda Doede

Jenna Donnell  
Ted Downum  
Paula Dutton  
Ralph Ellis  
Martha Estes  
Laura Etchison's Class  
Becky Feaster  
Everett Fields  
Jerry Sue Finney  
Valerie Fletcher  
Laurie Foster  
Heather Fox  
Annette Freeman  
Dondi Frisinger  
Barbara Frost  
Regina Gabel  
Mrs. Willard Gatewood  
Joan Glassell  
Ashton Goad  
Anne Gresham  
Carroll Haney  
Dr. Kevin Hatfield  
Randy Hayes  
Mark Henry  
Sue Hess  
Rick Hinterthuer  
Charlene Holman  
Charlotte Horvath  
Minerva Houser  
Missy Jaro  
Margaret Johnson  
Mary Ellen Johnson  
Stephanie Johnson  
Randi Johnston  
Willow Jongewaard  
Nancy Kelly  
Steve & Carol Kick  
Patricia Kile  
Shelley Kinder  
Kristin King  
John Kinyon  
Linda Knick  
Evy Lamb  
Jeff Ledbetter  
Tammi Reed Ledbetter  
Bailey Jo Lemke  
Lisé Lipko  
Gina Little  
Beverly Loomis  
Anita Lynch  
Carolyn Madison  
Holly Mast  
Mimi Mathis  
Stephanie Miles  
Charlotte Miller  
Heather Miller  
Monitor Elementary School,  
Ms. Childress, principal  
Cathy Montgomery  
Charlene Mooty  
Raquel Morris

Oda Mulloy  
Ann Myers  
Mary Jo Myers  
Sheila Nance  
Janet Neil  
Juanita Nordgren  
Lou Orr  
Amber Parker  
Elizabeth Parr  
Kathy Passmore  
Barbara Prewit  
Sue Richardson  
Janelle Riddle  
Elizabeth Ritchie  
Pamila Roberts  
Wilma Samuel  
Sandra Meyers' English class,  
Har-Ber High School  
Renee Self  
John Selph  
Linda Sheets  
Karen Showalter  
Thelma Smallen  
Deb Smith  
Ruby Smith  
Cyndy Spencer  
Bettye Squyres  
Sandi Stallings  
Stanfill's 4th grade class,  
Elmdale Elementary  
Robert Stark  
Juanita Story  
Henrietta Swacina  
Mattie Sweat  
Richard Tiberghien  
Nancy Tindell  
Thomas Triplett  
Linda Vigil  
Jessie Walls  
Lynne Wasson  
Nova Jean Watson  
Dr. Linda Watts  
Jane Williams  
Dianne Wilson  
Mildred Winborn  
Theresa Wohlfeld  
Aaron Wolfe  
Dr. Diana Gonzales Worthen  
Tina Wright  
Rev. Cyrus Young

## CALENDAR

**Through March 23, 2013.** *“Nothing but sorrow, trouble, and worry,”* an exhibit based on memories of people in the Ozarks during the Civil War.

**Through January 19, 2013.** *Arkansas/Arkansaw: A State and Its Reputation*, a traveling exhibit from Little Rock’s Old State House Museum, exploring the evolution of Arkansas’s hillbilly image.

**Through November 3.** *Timber!*, a photo exhibit on the history of the lumber industry in Northwest Arkansas.

**September 8, 10 a.m.–2 p.m.** 35th Ozark Quilt Fair. New and antique quilts for show and sale on the museum grounds. Music by Shout Lulu from 10 a.m.–1 p.m. Viewer’s Choice awards at 2 p.m.

**September 19, noon.** “The Life of Roscoe C. Hobbs,” a program on the timber magnate and land speculator whose estate is now Hobbs State Park, by independent researcher Tom Duggan.

**October 17, noon.** “The Crescent Hotel: The Norman Baker Years, Documented as a Graphic Novel,” a program by artist and illustrator Sean Fitzgibbon.

**October 26, 4:45–6:45 p.m.** Beans and Cornbread benefit supper. See page 4.

**November 3, 10 a.m.–3 p.m.** “Back When I Was Your Age,” storytelling workshop with Jan VanSchuyver. See page 7.

**November 6–May 11, 2013.** *Single Pens, Saddlebags, and Dogtrots*, a photo exhibit featuring Ozark log buildings.

**November 10.** “Other Voices: Civil War in the Ozarks,” a symposium exploring the wartime experiences of women, African Americans, Native Americans, and members of the Peace Society. Financed in part with tax funds from the State of Arkansas and the Arkansas Civil War Sesquicentennial Commission in association with the Arkansas Historic Preservation Program.

**November 14, noon.** “Whiffletrees, Fire Escapes, and Kitchen Cabinets,” a program on Springdale inventors by Shiloh Museum outreach coordinator Susan Young.

### 2013

**January 12, 10 a.m.–2 p.m.** Cabin Fever Reliever, the museum’s annual celebration of the New Year, featuring the ever-popular “Collectors Edition” of displays by local collectors.

**January 16, noon.** “Dinner’ll Soon Be Ready,” readings from Lilly Edens Preston’s memoir of life in the Benton County community of Glade, by Anita Frevert, president of the Glade Historical Society.

**February 4–January 11, 2014.** *From Archaeopteryx to Zapus*, an exhibit on the history of the University of Arkansas Museum.

**February 20, noon.** “Forgotten But Not Gone: Memories of the University of Arkansas Museum,” by Mary Suter, curator of collections; Dr. Nancy McCartney, curator of zoology; Dr. Mike Hoffman, former curator of anthropology; and Dr. Walt Manger, former curator of geology.

---

### Join the Shiloh Museum Association

- Satisfaction of knowing you are supporting an important cultural institution and helping preserve our Arkansas Ozark heritage, *and*
- 10% discount on Shiloh Store purchases
- Reduced fees for children’s and adult workshops
- Invitations to exhibit openings and special events

#### Consider a gift to the Shiloh Museum Endowment Fund

- Check here if you would like more information about the endowment fund.

#### Help us save money and trees

- Check here if you would like to receive your newsletter by email instead of U. S. mail.

Email address \_\_\_\_\_

### Membership Levels

- |                                                         |                                             |
|---------------------------------------------------------|---------------------------------------------|
| <input type="checkbox"/> Individual - \$15              | <input type="checkbox"/> Patron - \$50      |
| <input type="checkbox"/> School class - \$12.50         | <input type="checkbox"/> Sponsor - \$100    |
| <input type="checkbox"/> Family - \$20                  | <input type="checkbox"/> Sustaining - \$250 |
| <input type="checkbox"/> Senior Individual (65+) - \$10 | <input type="checkbox"/> Benefactor - \$500 |
| <input type="checkbox"/> Senior Couple - \$15           | <input type="checkbox"/> Founding - \$1,000 |

Name \_\_\_\_\_

Address \_\_\_\_\_

City \_\_\_\_\_

State \_\_\_\_\_ Zip \_\_\_\_\_

Please make check payable to: Shiloh Museum  
118 W. Johnson Avenue  
Springdale, AR 72764  
479-750-8165